

# THE LIBRARY PRESENTS

Bringing arts activities to  
venues across Cambridgeshire  
March – June 2025

Look out for our  
accessible activities



Supported using public funding by  
**ARTS COUNCIL  
ENGLAND**

Urban&Civic

**Babylon  
ARTS**



**Cambridgeshire  
County Council**

# CALENDAR OF EVENTS

We would like to thank everyone who helped select events for this season and all our volunteers who help make the programme run so smoothly.

## March

			Page
Fri 21	Roshni (Dance & Music)	Cherry Hinton Library	15
Sat 22	Samba Drumming Workshop	Whittlesey Library	23
Sat 29	Fused Glass Workshop	Wisbech Library	36

## April

Sat 5	Fun Dance Workshop	Clay Farm Centre	13
Sat 5	Clay Workshop	Littleport Library	35
Sat 5	Magical Honey (Dance)	Arbury Church of GS	14
Mon 7	After the Rain (Puppetry)	Ramsey Library	25
Wed 9	Babies Adventures in Music	Wisbech Library	20
Thurs 10	Printing Workshop	Alconbury Weald Pavilion	37
Fri 11	Fierce Fairytales (Theatre & Storytelling)	Huntingdon Library	29
Sat 12	Fierce Fairytales (Theatre & Storytelling)	Histon Library	29
Sat 12	SPLAT! (Family Comedy)	Cherry Hinton Library	12
Sat 26	Folded Paper Decoration Workshop	Sawston Library	33
Sat 26	Shake, Rattle & Roll (Music)	Chatteris Library	22

## May

Sat 3	Daisy Chapman (Music)	Cambourne Library	18
Sat 3	Upcycled Musical Instrument Workshop	March Library	24
Thurs 8	Phantom of the Opera (Film & Music)	St Ives Library	17
Fri 9	Phantom of the Opera (Film & Music)	March Library	17
Sat 10	After the Rain (Puppetry)	Sawston Library	25
Thurs 15	She-Wolves (Theatre & Storytelling)	Ramsey Library	28
Fri 16	Willow Weaving Workshop	March Library	38

# CALENDAR OF EVENTS

Sat 17	Samba Drumming Workshop	Papworth Library	23
Sat 17	Clay Workshop	Sawtry Library	35
Sat 17	3 Little Pig Tails (Puppetry)	Whittlesey Library	26
Sat 17	Printing Workshop	Soham Library	37
Tues 20	Willow Weaving Workshop	Burwell Library	38
Tues 20	Leather Flower Workshop	Northstowe Cabin	34
Sat 24	Folded Paper Decoration Workshop	Wisbech Library	33
Wed 28	The Zoo That Comes To You (Puppetry)	St Neots Library	27
Thurs 29	Fun Dance Workshop	Arbury Court Library	13
Sat 31	Leather Flower Workshop	Barnwell CtR Church	34

## June

Fri 6	Let People Like You (Theatre/Storytelling)	Ely Library	30
Sat 7	Clay Workshop	Papworth Library	35
Sat 14	Fused Glass Workshop	Cambourne Library	36
Sat 14	Shake, Rattle & Roll (Music)	Alconbury Pavilion	22
Sat 14	Creative Coding Workshop	Ely Library	32
Sat 14	Creative Coding Workshop	Ramsey Library	32
Sat 14	EmbodyXR (Dance & VR)	Cambridge Central Library	16
Sat 14	Cecily & Salty's Monster Seashore Shake-up! (Music)	St Ives Library	21
Sat 21	Cecily & Salty's Monster Seashore Shake-up! (Music)	Barnwell Baptist Church	21
Sat 21	3 Little Pig Tails (Puppetry)	Chatteris Library	26
Sun 22	The Zoo That Comes To You (Puppetry)	Northstowe Cabin	27
Fri 27	Folk Tales & Fiddles (Music & Stories)	Cambourne Library	19
Sat 28	Folk Tales & Fiddles (Music & Stories)	Burwell Library	19
Sat 28	Poetry Workshop	Ely Library	31
Sun 29	Poetry Workshop	Cambridge Central Library	31

# TICKETING INFORMATION

## Tickets can be purchased in the following ways:

- Online through [www.library.live/the-library-presents](http://www.library.live/the-library-presents)
- In person from participating libraries (cash only)
- On the door at all activities (subject to availability / cash only)
- By exchanging Digital Time Credits

## Ticket Prices

Standard **Performance** price: £8.50

Concession prices for performances:

£5 Students and Senior Citizens (over 66)

£4 Children (under 16), Unwaged and Disabled

For selected family shows tickets are £4, or £15 for a group of four people including at least one child and one adult.

Standard **Workshop** price: £6.50

Concession prices for workshops:

£3 Children (under 16), Unwaged, Disabled, Students, Senior Citizens (over 66).

**PLEASE NOTE: ALL CHILDREN UNDER 12 YRS MUST BE ACCOMPANIED BY A RESPONSIBLE ADULT (18+ YRS) WHO HAS PURCHASED A TICKET.**

**Adults can take part in all workshop activities.**

## 'Pay what you can' tickets

You choose which pricing option is best for you. Think about what the performance is worth to you and what you can afford **then book a ticket.**

**If you decide to pay more on the day, donation boxes will be available.**

(If you pay more you are supporting the whole programme and making sure ticket prices are accessible to as many people as possible).

Pricing options per ticket are: £2 / £4 / £6 / £8 / £10

## Companion Tickets

Disabled customers who need a companion to accompany them should book a free companion ticket when booking their own.

# TICKETING INFORMATION

## Babes in Arms

For events for families and all ages you can bring your baby (under 12 months old). If they require a seat you will need to buy a concession ticket.

## Time Credits

A limited number of Digital Time Credit places are available for selected performances; they cannot be used for workshops. A performance ticket costs 1 Time Credit.

For details please visit:

<https://tempotimecredits.org/use/venue/3230>

Earn Tempo Time Credits by volunteering with groups on the Tempo network.



## Digital Badges

You can earn a digital badge for attending any event with The Library Presents.

Digital badges record learning achieved outside of school. They list the skills developed so can be added to personal websites and CVs to showcase your engagement in the arts and help you pursue your chosen career.

To find out more, visit the Region of Learning platform: <https://navigatr.app/about/4/cambridgeshire-and-peterborough-xp>



## Refunds

**If you cannot attend, please let us know even if you do not wish to have a refund. Places are limited and there is often a waiting list.**

To obtain a ticket refund you must inform us at least seven days before the activity takes place: [thelibrarypresents@cambridgeshire.gov.uk](mailto:thelibrarypresents@cambridgeshire.gov.uk)

Refund requests with less than 7 days' notice will be considered individually.

If an activity is cancelled, you will be informed asap and can choose to get a full refund or to attend on a new date. Please be patient and wait to be contacted.

Refunds / Enquiries contact: [thelibrarypresents@cambridgeshire.gov.uk](mailto:thelibrarypresents@cambridgeshire.gov.uk)

# ACCESSIBILITY INFORMATION

## Everyone is welcome

We aim to make our activities as welcoming and accessible as possible. Detailed access information for all activities is on the Events page on our website. If you do not have access to the website please phone or email for details:  
Tel: 01223 706720 Email: [thelibrarypresents@cambridgeshire.gov.uk](mailto:thelibrarypresents@cambridgeshire.gov.uk)

### At all our events you can:

- Move around if you need to.
- Use quiet fidget toys (e.g. fidget spinner).
- Use ear defenders or weighted blankets.
- Stand if you need to (please move to the side or back of the audience).
- If strobe lighting, very loud music or sudden bangs are included this will be noted in the information for the event.
- Our audience seating is created using freestanding chairs. They are flexible and we can accommodate users of wheelchairs, mobility aids and service animals.

**For some activities we offer additional accessibility measures. Please look out for the following logos in the brochure.**



### Relaxed performances

Relaxed performances are safe spaces where special consideration is given to the sensory needs of Neurodiverse / Autistic audience members. Neurotypical audiences are also welcome.

- Bring sensory aids, vocalise and move around during the performance.
- There is a quieter space provided with chairs.
- Photos and a video tour of the venue will be on our website so you can become familiar with the space in advance.
- A staff member who has Autism Awareness Training will be present at the event.
- Overhead lights will be off for daytime activities, this is not possible for evening events.



### BSL Signed Performances

These are performances where a BSL (British Sign Language) interpreter is provided and where someone who speaks BSL will be at the event to greet audiences.

# ACCESSIBILITY INFORMATION



## Hearing Loops

Hearing loops are available. Look for the Hearing Loop logo and book one with your ticket if required. For activities without the logo, we can provide a loop if you inform us at least 10 days in advance.



## Audio Described Performances

Trained audio-describer talks to individuals through earpiece creating mental pictures by flashes of suggestive description interjected at appropriate moments. The describer will not speak over actors or significant sound moments / silent and poignant moments.



## Touch Tours

If you would benefit from a touch tour before a performance, please contact us when you book your ticket so we can try to arrange this for you. You can bring someone to describe the performance to you for free by booking a (free) companion ticket.



## Live Captioned Performances

The words are displayed on a screen, placed near the stage or in the set and can be seen at the same time as they are spoken or sung. Speakers' names, sound effects and offstage noises are also shown.

If you have other access requirements that you would like to check with us before booking, please get in touch with us. Please allow as much notice as possible so we can arrange appropriate services.

Contact: [thelibrarypresents@cambridgeshire.gov.uk](mailto:thelibrarypresents@cambridgeshire.gov.uk) / 01223 706720.

## COVID-19

**The Library Presents is aware of the continuing presence of Covid-19.**

- Library venues have CO2 monitors installed.
- Where possible, venues will be well ventilated.
- Attendees are welcome to wear face coverings if they choose.

# VENUE INFORMATION

For detailed venue access and travel information visit the 'venue access information' blog post on our website [www.library.live/the-library-presents](http://www.library.live/the-library-presents)

Contact us with accessibility or venue questions:

Phone: 01223 706 779 Email: [thelibrarypresents@cambridgeshire.gov.uk](mailto:thelibrarypresents@cambridgeshire.gov.uk)

---

**Alconbury Weald Cricket Pavillion** The Boulevard PE28 4LT.

Allocated accessible parking, accessible toilet.

---

**Arbury Church of the Good Shepherd Community Hall** Mansel Way, Cambridge CB4 2ET. Accessible parking, accessible toilet. Bus stops at Nursery School and Campkin Road both 5 minute walk.

---

**Arbury Court Library** 46 – 47 Arbury Road, Cambridge CB4 2JQ.

No parking at venue, accessible toilet. Bus stops at Nursery School and Campkin Road both 5 minute walk.

---

**Barnwell Baptist Church** Howard Rd, Cambridge CB5 8QSA

Church car park, accessible toilet. Dudley Road bus stop 2 minute walk.

---

**Barnwell Christ the Redeemer Church** Newmarket Road, Cambridge CB5 8RS.

Car park at church, accessible toilet. Newmarket Road bus stop 2 minute walk.

---

**Burwell Library** Village College, Burwell CB25 0DU.

Accessible parking, accessible toilet. Guyatt Court bus stop 3 minute walk.

---

**Cambourne Library** Sackville House, Sackville Way CB23 6HL.

Allocated accessible parking, accessible toilet. High Street bus stop 2 minute walk.

---

**Cambridge Central Library** 7 Lion Yard CB2 3QD. Accessible parking in Grand Arcade car park, accessible toilet, access via lifts. St Andrews Street & Drummer Street bus stations, 4 minute walk. Cambridge train station 26 minute walk.

---

**Chatteris Library** 2 Furrowfields Rd, Chatteris PE16 6DY.

Accessible parking, accessible toilet. Ash Grove bus stop 1 minute walk.

---

**Cherry Hinton Library** High Street CB1 9HZ.

Accessible parking, accessible toilet. Fisher's Lane bus stop 2 minute walk.

---

**Clay Farm Centre** Hobson Square, Trumpington, Cambridge CB2 9FN. Accessible parking, accessible toilet (radar key). Trumpington Busway 4 minute walk.

---

**Ely Library** 6 The Cloisters CB7 4ZH.

No parking at venue, lift to access library, accessible toilet. Bus stops at Market Street and Newnham Street, both 3 minute walk. Ely train station 18 minute walk.

---



# VENUE INFORMATION

**Histon Library** School Hill CB24 9JE.

Parking at shops, accessible toilet. School Hill bus stop 1 minute walk.

**Huntingdon Library** Princes Street PE29 3PA.

Accessible parking on street, accessible toilet - Radar key. Huntingdon Bus Station 1 minute walk.

**Littleport Library** Victoria Street CB6 1LU. Accessible parking in public car park (2 minute walk), accessible toilet. White Hart Lane bus stop 1 minute walk.

**March Library** City Road PE15 9LT. Accessible parking, accessible toilet. Grays Lane bus station 10 minute walk. March train station 28 minute walk.

**Northstowe Community Centre (The Cabin)** Pathfinder Way CB24 1AU.

Accessible parking, accessible toilet. Longstanton Park and Ride, 8 minute walk.

**Papworth Library** Pendrill Court, Ermine St North, Papworth Everard CB23 3UY.

Accessible parking at shops. Elm Way bus stop 1 minute walk.

**Ramsey Library** 25 Great Whyte PE26 1HA.

Accessible parking on road, accessible toilet. New Road Bus Station 1 minute walk. Great Whyte stop 3 minute walk.

**Sawston Library** 41 New Road CB22 3BP.

Accessible parking, accessible toilet. Babraham Road bus stop 2 minute walk.

**Sawtry Library** Green End Road PE28 5UX

Accessible parking, accessible toilet. Middleford Road bus stop 2 minute walk.

**Soham Library** 7 Clay St, Soham, CB7 5HJ.

Accessible parking, accessible toilet. Brook Dam Lane bus stop 4 minute walk.

**St Ives Library** 4 Library Row, Station Road PE27 5BW.

Accessible parking outside Waitrose, accessible toilet. St Ives bus station 2 minute walk. Park & ride 9 minute walk.

**St Neots Library** 1 Priory Lane PE19 2BH.

Accessible parking, accessible toilet, lift to 1st floor. Market Square bus stops A to E, 3 minute walk. St Neots Train station 26 minute walk.

**Whittlesey Library** 31 – 35 Market Street PE7 1BA.

Accessible parking on street, accessible toilet. Whitmore Street bus stop 2 minute walk. Whittlesey train station 18 minute walk.

**Wisbech Library** Ely Place PE13 1EU.

Accessible parking on street, accessible toilet. Horsefair bus station 5 minute walk.

# VOLUNTEERS NEEDED

## Can you help us with any of the following?

- **Setting up spaces** (putting out chairs, tables & backdrops)
- **Stewarding** (welcoming people, checking tickets, collecting feedback)
- **Refreshments** (serving interval drinks or making hot drinks at workshops)
- **Promotion** (distributing brochures and posters or posting on social media)
- **Technical Support** (setting up basic sound and light equipment)

To find out more please contact us:  
[thelibrarypresents@cambridgeshire.gov.uk](mailto:thelibrarypresents@cambridgeshire.gov.uk)



SUPPORTED BY

## Urban&Civic

Urban&Civic are proud to support The Library Presents programme, and ensure that across the County people can enjoy, share and learn from a great programme of cultural and creative activities. Our libraries are now vibrant community spaces, in the heart of our market towns and cities. In each of the 3 developments we are bringing forward in the county – Waterbeach, Alconbury Weald and Wintringham at St Neots – we will be putting libraries

at the heart of the civic centres, to provide the place for support, events and activities, learning and sharing that is so important to people and places. So whether it is poetry, plays, art or music; story telling about the past or creative thinking about the future; we hope everyone finds some great activities to get involved with in their local community and inspiration from the creative talent around us.



# You decide what The Library Presents!

## Did you know that The Library Presents events are selected by the public?

You are invited to make selections from a menu that includes theatre, music, dance, comedy, puppetry, magic and more.

You can also tell us what ages you would like the events to be suitable for and your access requirements.

The brochure you are reading contains events that were selected by hundreds of Cambridgeshire residents.

We pride ourselves on programming high quality events that the public want to see, and your input is vital in making the scheme the success it is. We would like to thank all the people who have given us their choices...and we need more!

The more feedback we receive, the more we can ensure that libraries have the events their communities want.

## How do I make my selections?

- View a menu in your local library, complete a selection slip and pop it in a The Library Presents selection box.
- Visit [www.library.live/the-library-presents](http://www.library.live/the-library-presents) to watch film clips of what's on offer and make selections online.
- If you are a community group, a project coordinator can visit to talk about the menu, show you clips and collect your choices. To arrange a visit please email [thelibrarypresents@cambridgeshire.gov.uk](mailto:thelibrarypresents@cambridgeshire.gov.uk)

## Look out for the next selection phase during March 2025

We will publicise news about when the next selection is open, or you can join our mailing list (see back cover) and we'll let you know about selection times. You will also be notified about ticket sales for forthcoming programmes so you can book early for the events you're interested in

...and thank you for your lovely comments.

'An inspiring programme.'

'Thank you, another brilliant live performance. So good - so local.'

'Lovely programme - very accessible.'

'Absolutely wonderfully organised and very welcoming!'

'Absolutely brilliant events at a great price. Please keep it up.'

'Another amazing event, would definitely recommend to others.'

'The breadth of the programme is its strength.'

## SPLAT!

A physical comedy with no words set in an artist's studio. Two artists, one very serious, the other very messy, attempt to complete their masterpieces. They journey through the history of art, experiencing the techniques of the great masters. A show about collaboration, play, dedication, spontaneity and letting go.

*'Madcap brilliance...  
sheer comedic joy'*

\*\*\*\* Broadway Baby

*'Excellent cartoonish  
physicality'*

\*\*\*\* Theatre Bubble



### Accessibility Information

Full accessibility and venue information on pages 6 – 9.



### British Sign Language

The show features no language and no loud noises. It is accessible for deaf audiences. Music is played throughout. Midway through the audience can participate in recreating a painting.

## Cherry Hinton Library

**Saturday 12 April 3.45pm**

(Doors open 3.30pm)

**Running time:** 45 minutes

**Suitable for:**

Families with children aged 3 – 6 yrs

**Check it out:** [www.ofthejackel.co.uk](http://www.ofthejackel.co.uk)

**Tickets:** £4 / £15 (Family Saver)

# DANCE

## Fun Dance Workshop

Join mother and daughter duo, **Celestina and India**, on an enchanting journey where rhythm, movement, and spoken word converge. Hip-hop, jazz, and Afro beats blend into a vibrant tapestry of dance and music. This is more than a workshop, it is a magical experience where families unite, hearts dance, and spirits soar. No prior experience needed. The emphasis is on enjoying movement and the freedom of dance.



### Accessibility Information

Full accessibility and venue information on pages 6 – 9.

**See:** Bright, colourful outfits, smiling faces, and joyful movements from children and adults dancing together.

**Hear:** A mix of spoken word rap, lively music from different cultures, and laughter.

**Touch:** Soft floor mats for stretching, small drums or simple props for rhythm.

### Clay Farm Community Centre

Saturday 5 April 2pm

### Arbury Court Library

Thursday 29 May 2.15pm

**Running time:** 45 minutes

**Suitable for:** Families with children aged 4+ ys

**Check it out:** <https://tinyurl.com/3as5b89e>

**Tickets:** £3 (Adults and children require tickets)

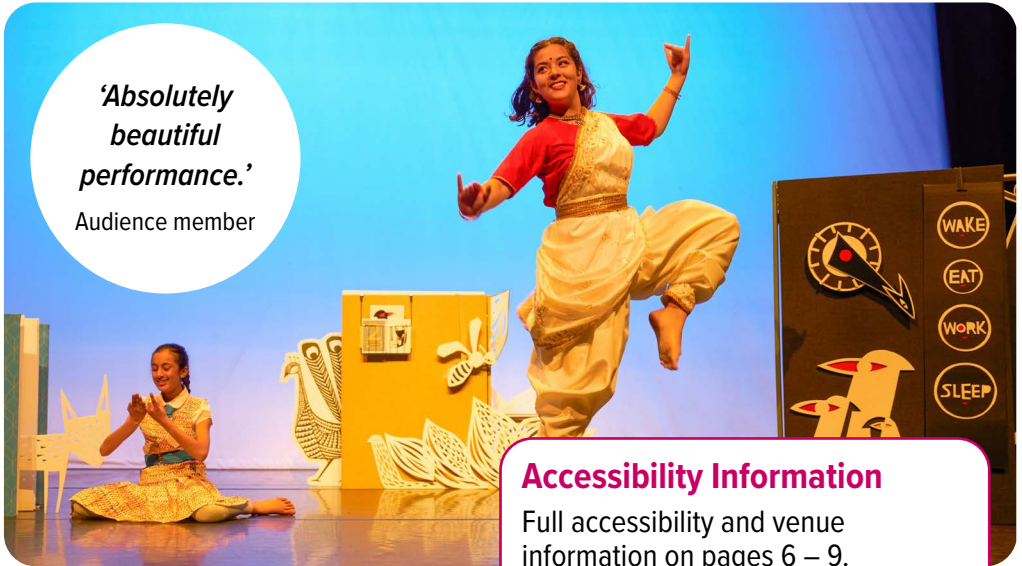
# DANCE

## Magical Honey

Enchanting dance, magic tricks and live music from **Sanskriti Dance**. Maya and Saraswati explore a mystical world. Here they meet dancing peacocks, imaginary bees and flowers appearing from nowhere. But they need your help and a bit of magic to save this beautiful world from an evil headteacher.

*'Absolutely beautiful performance.'*

Audience member



### Accessibility Information

Full accessibility and venue information on pages 6 – 9.



**Relaxed Performance** Special consideration is given to the sensory needs of Neurodiverse / Autistic audience members. Join in interaction from your seat or go to the front when invited. Recorded and live music played at comfortable levels, plus spoken word. The headteacher gives a stern look to the adults in the audience (in a comical way).

### Arbury: Church of the Good Shepherd

**Saturday 5 April**

2.45pm (Doors open 2.30pm)

#### Running time:

45 minutes plus after-show activities

#### Suitable for:

Families with children aged 5+ yrs

#### Check it out:

[www.sanskriti.org.uk](http://www.sanskriti.org.uk)

**Tickets:** Pay what you can

(Booking required – see page 4)

# DANCE

## Roshni

An intimate blend of dance and live music from the **Sonia Sabri Company**. Featuring percussive dance and music from Asia, the Middle East and Eastern Europe. The show features three distinctive pieces which explore the highs and lows of life today. Come on an emotional journey, through wordless storytelling and upbeat audience interaction. Improvisation is a core part of a solo Kathak dance performance – so no performance of Roshni is the same!



*'Beautifully energetic and visually stunning.'*

Bournemouth  
Seeker

### Cherry Hinton Library

Friday 21 March 8pm (Doors open 7.40pm)

**Running time:** 70 minutes, plus interval

**Suitable for:**

Adults and young people aged 6+ yrs

**Check it out:** [www.sso.org.uk](http://www.sso.org.uk)

**Tickets:** £8.50 / £5 / £4

### Accessibility Information

Full accessibility and venue information on pages 6 – 9.

No language used except when the audience are asked questions and invited to take part in clapping. Expect to see lots of spins and mime. Sounds include beats of the feet, live British and south Asian instruments and Indian beatboxing. Music is not loud.

# VIRTUAL REALITY GAMING

## EmbodysXR by Mercurial Dance

An immersive dance game that combines physical movement and digital storytelling. Experience a series of stunning intricate VR (Virtual Reality) worlds featuring motion captured dance performances. Each beautifully designed world is interactive and relates to the central story of the sign spinner. The story aims to raise awareness of the impact of anxiety in young people. No previous experience of VR is necessary. When not playing the game participants can enjoy mindful art workshops and watch the sign spinner performing in person.



### Cambridge Central Library

**Saturday 14 June** 11am and 3pm

#### Running time:

2 hours (Game duration 25 minutes)

#### Suitable for:

Adults and young people 12+ yrs

#### Check it out:

[www.mercurialdance.co.uk/embodysxr](http://www.mercurialdance.co.uk/embodysxr)

**Tickets:** £6.50 / £3

#### Accessibility Information

Full accessibility and venue information on pages 6 – 9.

Participants wear headsets and hold controllers. Game includes music and dialog. It is designed to be played standing but can be played seated. Not suitable for those with epilepsy or photosensitivity.



## Phantom of the Opera – Film screening with live music by Minima

Celebrating 100 years of the 1925 thriller based on the novel by Gaston Leroux. Beneath the sewers of the Paris Opera House dwells a masked figure who dreams of turning chorus singer Christine into a diva. Lon Chaney's ghastly make-up and outrageous performance made this a classic of silent film. **Minima's** new original score enhances the film's drama. Live instruments will include cello, double bass, guitars, synthesiser and drums.

*'Minima's  
unmistakably spine-  
tingling music clung  
to each twist of  
the movie.  
The Guardian*



### St Ives Library

Thursday 8 May 7pm (Doors open 6.40pm)

### March Library

Friday 9 May 7pm (Doors open 6.40pm)

**Running time:** 77 minutes, plus interval

#### **Suitable for:**

Adults and young people 12+ yrs

#### **Check it out:**

[www.minimamusic.co.uk](http://www.minimamusic.co.uk)

**Tickets:** £8.50 / £5 / £4

### Accessibility Information

Full accessibility and venue information on pages 6 – 9.

There will be a live four piece band performing to a black and white silent film. There are no subtitles to read, only chapter headings between scenes. There will be moments of quite loud music.

## Daisy Chapman

A talented singer-songwriter who combines an incredible voice with beautiful piano playing and exquisite digital looped harmonies. **Daisy's** well-crafted lyrics range from satirical tales from history, to comedic stories. Daisy will be accompanied by **Sue Lord's** dramatic and sweeping violin to create captivating and moving songs. The audience are encouraged to ask questions between songs as the themes are discussed.



*'Fantastic voice,  
brilliant musician -  
a great show'*

Live & Local  
Rural Touring

### Cambourne Library

**Saturday 3 May 4pm** (Doors open 3.40pm)

**Running time:** 90 minutes, plus interval

**Suitable for:**

Adults and young people aged 10+ years

**Check it out:** <https://bit.ly/4gPbj9t>

**Tickets:** £8.50 / £5 / £4

### Accessibility Information

Full accessibility and venue information on pages 6 – 9.



**Relaxed event.** Special consideration is given to the sensory needs of Neurodiverse / Autistic audience members. Live music at a comfortable volume.



**Hearing Loops** available.

# MUSIC & STORYTELLING

## Folk Tales & Fiddles

An evening of local folk tales and brilliant contemporary folk music. Local storyteller **Marianne Powell**, will be telling two spooky, mysterious and uplifting Fenland tales. Instrumental folk band, **Orphean Sprig**, will provide original music to add to the atmosphere. Expect foot-tapping tunes, fascinating tales and a hint of audience participation (for those who want it).



*'I felt uplifted and enjoyed every aspect of the performance.'*

Audience comment

### Cambourne Library

Friday 27 June 7pm (Doors open 6.40pm)

### Burwell Library

Saturday 28 June 7pm (Doors open 6.40pm)

**Running time:** 90 minutes, plus interval

**Suitable for:** Adults and young people 12+yrs

**Check it out:** [www.orpheansprig.com](http://www.orpheansprig.com)

**Tickets:** £8.50 / £5 / £4

### Accessibility Information

Full accessibility and venue information on pages 6 – 9.



**Relaxed Performance** Special consideration is given to the sensory needs of Neurodiverse / Autistic audience members.

Amplified music with low volume settings. Optional audience interaction (e.g. clapping along).



**Hearing Loops** available.

## Babies Adventures in Music

Bring your baby for a bounce. This warmly interactive performance for babies, families and friends celebrates music. Come and enjoy a host of instruments, musical styles, gentle movements and stimulating sounds. It features harp, accordion, stringed instruments, songs in different languages and lots more.



*'A spellbinding experience. Totally engaging for babies and toddlers.'*

Audience comment

### Accessibility Information

Full accessibility and venue information on pages 6 – 9.



**Relaxed Performance** This event is designed to be flexible around you and your baby. Gently sing along and sway with the music if you wish. After the show meet the musicians and see the instruments up close.

The music is mainly calm and soothing, with some more lively pieces but no loud bangs or crashes.

### Wisbech Library

**Wednesday 9 April** 11.30am (Doors open 11.15am)

**Running time:** 45 minutes

#### Suitable for:

Families with children aged 0 – 18 months

#### Check it out:

[www.babiesadventuresinmusic.com](http://www.babiesadventuresinmusic.com)

**Tickets:** Pay what you can

(Booking required – see page 4)



## Cecily & Salty's Monster Seashore Shake-up!

Join the **Musical Balloon Band** for live music, puppet theatre and balloon animals in an interactive and inclusive performance story for the whole family. Sing the 'Tidy up Song' and beat the 'Recycle Rhythm Challenge' to help Cecily and Salty the Sea Monster clean the sea, bash the beach clutter, save their friends from plastic peril and conserve the planet.

*'It was  
super fun  
and brilliant!'*

Audience comment



### Accessibility Information

Full accessibility and venue information on pages 6 – 9.



**Relaxed Performance** Special consideration is given to the sensory needs of Neurodiverse / Autistic audience members. Balloons may pop unexpectedly. Lyric sheets available in large font. Choose to sit on a chair, cushions or mats.

### St Ives Library

**Saturday 14 June 4.45pm** (Doors open 4.30pm)

### Barnwell Baptist Church

**Saturday 21 June 11.30am** (Doors open 11.15am)

**Running time:** 40 minutes

**Suitable for:**

Families with children aged 0 - 7 yrs

**Check it out:** [www.musicalballoonband.com](http://www.musicalballoonband.com)

**Tickets:** Pay what you can

(Booking required – see page 4)

## Shake, Rattle & Roll

A chance to attend an interactive live music gig with your toddler! Join in traditional nursery rhymes, action songs, folk dancing, international songs and original compositions. This is fun for the whole family that shows children how fantastic live music is. Instruments include flute, trumpet, violin and guitar.



*'Excellent event.  
Great fun.'*

*'A fantastic  
opportunity to see  
and hear instruments  
close-up.'*

Participant comments

### Chatteris Library

**Saturday 26 April**

2.30pm Suitable for families with children under 3 yrs

3.30pm Suitable for families with children aged 3 – 5 yrs

### Alconbury Weald Cricket Pavilion

**Saturday 14 June**

3pm Suitable for families with children under 5 yrs

**Running time:** 40 minutes

**Check it out:** [www.shake-rattle-roll.org](http://www.shake-rattle-roll.org)

**Tickets:** Pay what you can (Booking required – see page 4) Adults and children require tickets.

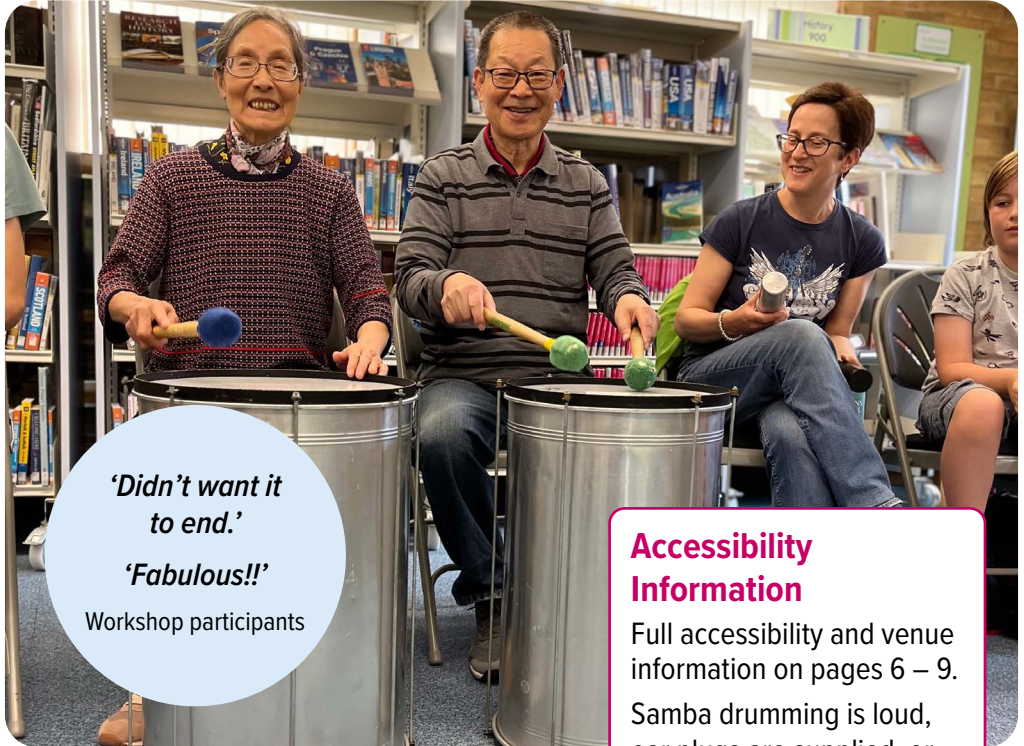
### Accessibility Information

Full accessibility and venue information on pages 6 – 9.

Everyone is encouraged to move, dance and sing as much or as little as they are comfortable with. Children may be given egg shakers and a scarf for waving during songs.

## Samba Drumming Workshop

A high energy and all-inclusive experience that will get everyone having fun with beats and rhythms. Never touched a drum? Doesn't matter, **Anthony Paul** will support you to have a go. All instruments provided.



*'Didn't want it to end.'*

*'Fabulous!!'*

Workshop participants

### Accessibility Information

Full accessibility and venue information on pages 6 – 9.

Samba drumming is loud, ear plugs are supplied, or you can bring your own ear defenders.

Enjoyment is the main aim; everyone will be making mistakes as they learn.

Drumming takes place with hands or sticks. Shakers are also used.

### Whittlesey Library

Saturday 22 March 2pm

### Papworth Library

Saturday 17 May 2.30pm

**Running time:** 2 hours

**Suitable for:** Families (7+ yrs) and Adults

**Tickets:** £6.50 / £3



## Upcycled Musical Instrument Workshop

Learn about the magic behind sound and how to turn trash into tunes by making a cool musical instrument using recycled items. The **Orang Collectif** will provide you with the tools you need. Those who book will be sent a list of useful items to bring. Featured on BBC Bitesize's The Regenerators.



**March Library**  
**Saturday 3 May 1.30pm**

**Running time:** 2 hours

**Suitable for:**

Adults and children aged 4+ yrs

**Tickets:** £6.50 / £3

### Accessibility Information

Full accessibility and venue information on pages 6 – 9.

Involves folding materials and using glue tape and scissors. Children must be accompanied by an adult to assist as needed. There will be loud noises during the music-making.





## After the Rain

A magical puppet show about nature. Ivy answers a call for help from a stranded worm and is taken on a forest adventure. Here she meets birds, mystical mushrooms and all the wonderful creatures that love it when it's wet! This playful performance by **Sabotage Theatre Company** features rod, glove and shadow puppets, plus original music. It will be followed by a workshop where you can have a go at being a puppeteer.



*'Children of all ages sat enthralled throughout the performance.'*

Audience comment

### Accessibility Information

Full accessibility and venue information on pages 6 – 9.



#### Relaxed Performance

Special consideration is given to the sensory needs of Neurodiverse / Autistic audience members. The show features music and dialogue. The audience is encouraged to sing along.

### Ramsey Library

**Monday 7 April** 11am (Doors open 10.45am)

### Sawston Library

**Saturday 10 May** 3pm (Doors open 2.45am)

**Running time:** 40 minute performance followed by 60 minute workshop

**Suitable for:** Families with children aged 3 - 7 yrs

**Check it out:** [www.sabotagetheatre.com](http://www.sabotagetheatre.com)

**Tickets:** £4 / £15 (Family Saver)

# PUPPETRY

## 3 Little Pig Tails

**Garlic Theatre** present a fresh and funny version of the classic story of The Three Little Pigs set in Paris. A grumpy old wolf is a chef looking for pigs' tails for his soup. This funny and warm-hearted show will make you squeal with laughter. It is bristling with puppets, live music and lots of joining in.



*'Fantastic,  
my 4-year-old  
and I loved it.'*

Audience  
comment

### **Whittlesey Library**

**Saturday 17 May 2.30pm** (Doors open 2.15pm)

### **Chatteris Library**

**Saturday 21 June 3pm** (Doors open 2.45pm)

#### **Running time:**

45 minutes plus 15 minute meet the puppets.

#### **Suitable for:**

Families with children aged 3 - 8 yrs

**Check it out:** [www.garlictheatre.org.uk](http://www.garlictheatre.org.uk)

**Tickets:** £4 / £15 (Family Saver)

### **Accessibility Information**

Full accessibility and venue information on pages 6 – 9.

A bit scary in parts but everything is ok in the end.

Plenty of interaction - singing, cheering, clapping and doing actions. Live accordion music.

Puppets may approach the audience after the show.

On request you can see the puppets for accessibility before the show.



## The Zoo That Comes To You

**Scarlet Oak Theatre** presents a charming group of cheeky animals. Follow two wildlife enthusiasts who provide a temporary home to those in need. They have a sanctuary full of animals, but no-one has come to visit. So they have decided to see the world and bring the zoo to you!



*'We all loved it.  
Would recommend  
for everyone'*

Audience comment

### Accessibility Information

Full accessibility and venue information on pages 6 – 9.

Pre-show Touch Tour available on request. There is dialogue throughout, live music and recorded music at a moderate volume.

Gentle audience interaction (e.g. asking questions and inviting volunteers on stage with their consent). In some parts the audience can shout out in response to a puppet being cheeky!

### St Neots Library

**Wednesday 28 May** 11am (Doors open 10.45am)

### Northstowe Community Cabin

**Sunday 22 June** 2pm (Doors open 1.45pm)

**Running time:** 1 hour followed by 15-minute meet the puppets

#### **Suitable for:**

Families with children aged 5 to 11 yrs

**Check it out:** [www.scarletoaktheatre.com](http://www.scarletoaktheatre.com)

**Tickets:** £4 / £15 (Family Saver)

## She-Wolves

The stories of seven women who ruled England before Elizabeth I and were vilified as “she-wolves” for their refusal to be tamed. Through movement, spoken word, animations, and song, **Laura Careless** breathes new life into these thrilling episodes and captivating personalities. Adapted from the book/BBC series by Helen Castor.

*‘Radically relevant’*

Broadway Baby \*\*\*\*

*‘Gripping, stunning,  
mesmerizing’*

Fringe Review  
Must-See Show

### Ramsey Library

Thursday 15 May 7.45pm (Doors open 7.20pm)

#### Running time:

55 minutes followed by 15 minute Q&A

#### Suitable for:

Adults and young people aged 12+ yrs

**Check it out:** [www.shewolvesproject.com](http://www.shewolvesproject.com)

**Tickets:** £8.50 / £5 / £4

#### Accessibility Information

Full accessibility and venue information on pages 6 – 9.

Includes expressions of anger and animalistic behaviour, and a reference to a medieval execution. Music is loud or tense in parts.



**Hearing Loops**  
available.

# THEATRE & STORYTELLING

## F(able): Fierce Fairy Tales for the Next Generation of Heroes

An uplifting and modern retelling of fairy tales, where disabled characters are the heroes! This fun show by **Helena Ascough** features storytelling and animation with an exciting original soundtrack. Come and experience fairy tales like you have never experienced them before...big kids welcome!



### Huntingdon Library

**Friday 11 April** 2.30pm (Doors open 2.15pm)  
and 3.30pm (Doors open 3.15pm)

### Histon Library

**Saturday 12 April** 3pm (Doors open 2.45pm)

**Running time:** 30 minutes

#### **Suitable for:**

Families with children aged 5 – 11 yrs

**Check it out:** <https://tinyurl.com/3j3kn32r>

**Tickets:** Pay what you can

(Booking required – see page 4)

### Accessibility Information

Full accessibility and venue information on pages 6 – 9.



#### **Captioned, Integrated Audio Description and British Sign Language.**

With every story the audience learn a BSL sign to use when they hear that word. The show features dialogue, background music and nature sounds.



**Hearing Loops** available.

## Let People Like You

Trans performer **Edalia Day** presents a feel-good show about letting yourself be loved (sometimes even by yourself). This performance - full of comedy, poetry and songs - centres around the years Edalia found herself while living in Paris. It draws upon the many wild adventures of love, loss and joy that the universe has brought her since. Expect joyous spoken word poetry and an uplifting exploration of what it means to be alive and thrive as yourself.



### Ely Library

**Friday 6 June** 7.30pm (Doors open 7.10pm)

**Running time:** 1 hour followed by 15 minute Q&A

#### **Suitable for:**

Adults and young people aged 12+ yrs  
(contains mild bad language)

**Check it out:** <https://tinyurl.com/2ad4an6u>

**Tickets:** £8.50 / £5 / £4

### Accessibility Information

Full accessibility and venue information on pages 6 – 9.



**Relaxed event.** Special consideration is given to the sensory needs of Neurodiverse / Autistic audience members.

## Poetry Workshop

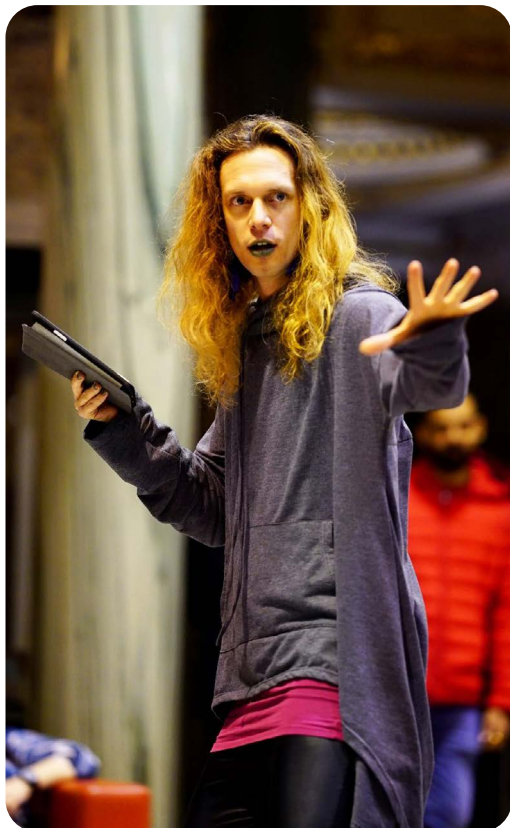
Join trans, neurodivergent performance poet **Edalia Day** for this gentle and joyful spoken word workshop.

Explore how the rhythms and flavours of words help to create a captivating performance poem.

Edalia will help you tap into whatever brings you joy and to communicate and inspire in a beautiful way through words.

No previous writing experience needed.

Follow this link to watch one of Edalia's poem films: <https://bit.ly/4gJc0kL>



### Ely Library

Saturday 28 June 2pm

### Cambridge Central Library (for Neurodivergent and Autistic people)

Sunday 29 June 1pm

**Running time:** 2 hours

**Suitable for:**

Adults and young people 14+ yrs

**Tickets:** £6.50 / £3

### Accessibility Information

Full accessibility and venue information on pages 6 – 9.



**Relaxed event.** Special consideration is given to the sensory needs of Neurodiverse / Autistic participants.

## Creative Coding Workshop

A hands-on guide to creative coding. Composer and coder **Charlie Hooper-Williams** will teach you how to make simple, visual, interactive scenes. Make things spin, glow, warp, and sparkle as you learn about rendering, lighting and textures. You will use the same 'TouchDesigner' software (free for Mac or Windows) that Charlie uses for his live shows. Suitable for anyone with basic computer skills.



### Ely Library

Saturday 14 June 10am

### Ramsey Library

Saturday 14 June 3pm

**Running time:** 90 minutes

**Suitable for:**

Adults and young people aged 12+ yrs

**Check it out:** <https://bit.ly/4fNIWqI>

**Tickets:** £6.50 / £3

### Accessibility Information

Full accessibility and venue information on pages 6 – 9.

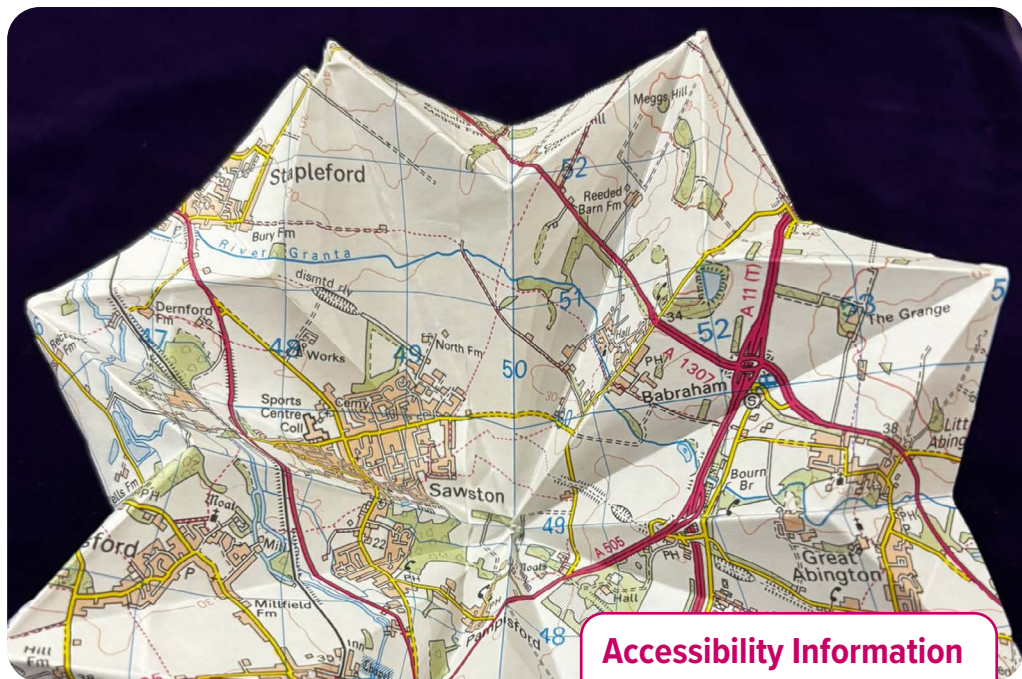
Bring your own laptop if you have one or borrow one by emailing [thelibrarypresents@cambridgeshire.gov.uk](mailto:thelibrarypresents@cambridgeshire.gov.uk) when you book your ticket. The entire workshop is interactive. Participants should have basic computer skills (open/save a file, using a mouse/trackpad, right-click, attach a file to an email).





## Folded Paper Decoration Workshop

Use upcycled maps to create unique decorations that are special to you. Pick where you live now, where you grew up or a favourite place. **Susan Widlake** from **Mill House Millinery** will carefully guide you through the process.



**Sawston Library**  
Saturday 26 April 2pm

**Wisbech Library**  
Saturday 24 May 2pm

**Running time:** 2 hours

**Suitable for:**

Adults and young people aged 12+ yrs

**Tickets:** £6.50 / £3

### Accessibility Information

Full accessibility and venue information on pages 6 – 9.

Fitting together the shapes is quite fiddly and you will have to look carefully at the maps. Some use of glue and scissors. Under 16s will need an adult with them. Maps might have different smells depending on where they were stored.

## Leather Flower Workshop

Let the colours of spring stay with you all year round by making a leather flower with **Susan Widlake** from **Mill House Millinery**. Learn how to cut, stiffen, shape and assemble leather to make a spring anemone. All materials and tools provided.



### Northstowe Community Cabin

Tuesday 20 May 6.30pm

### Barnwell: Christ the Redeemer Church

Saturday 31 May 10.30am

Running time: 2 hours

Suitable for:

Adults and young people aged 12+ yrs

Tickets: £6.50 / £3

### Accessibility Information

Full accessibility and venue information on pages 6 – 9.

You'll get your fingers in glue, so it will be sticky. Need to be able to use scissors, and a needle and thread. **Under 16s will need an adult with them.** The leather has a smell and is soft on one side, and smooth on the other.



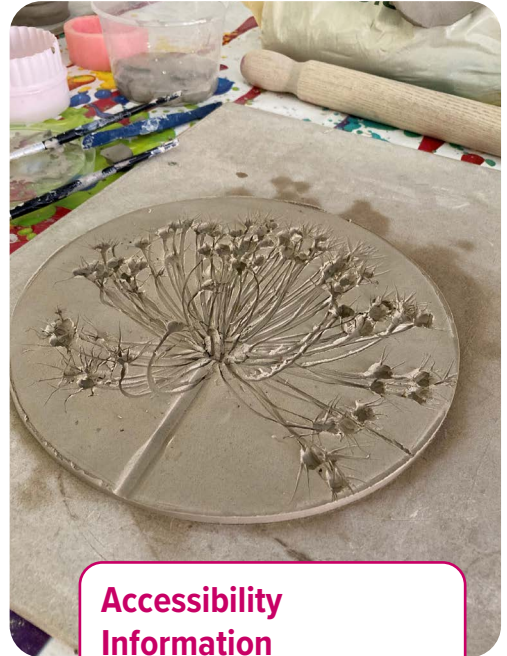
## Clay Workshop

Use a range of techniques to create your own unique ceramic artwork with artist **Louise Beale**. Bring your own natural forms (e.g. leaves, flowers and pebbles) to imprint into clay and make your own sculpture to take home. All tools and materials provided.



*'Fun, relaxing  
and social'*

Participant comment



### Accessibility Information

Full accessibility and venue information on pages 6 – 9.

Suitable for beginners with no prior experience. Step by step instructions given. Use of water. Clay feels cold and can be slippery. People with low finger strength may want to bring a person to support them with moulding the clay (free companion tickets are available).

### Littleport Library

Saturday 5 April 2.30pm

### Sawtry Library

Saturday 17 May 10.30am

### Papworth Library

Saturday 7 June 2.30pm

**Running time:** 2 hours

**Suitable for:**

Adults and children aged 4+ yrs

**Tickets:** £6.50 / £3

## Fused Glass Workshop

**June Massey** will help you use your creative skills to make a beautiful, unique piece of glass art. Have fun sharing ideas and learn interesting facts about glass artistry. June will take your work home to fire in her kiln and return it to the library a week later.



*'Fantastic, practical workshop – would definitely attend again.'*

Participant comment

### Accessibility Information

Full accessibility and venue information on pages 6 – 9.

Instructions and safety information given verbally and as text. No cutting or breaking of glass involved. Tweezers and small scoops are provided. Glass can be placed by someone else instructed by a participant.

### Wisbech Library

Saturday 29 March 10.30am

### Cambourne Library

Saturday 14 June 2pm

**Running time:** 2 hours

**Suitable for:** Adults and children 8+ yrs

**Check it out:** [www.semperartglass.co.uk](http://www.semperartglass.co.uk)

**Tickets:** £6.50 / £3



## Printing Workshop

Create unique monoprints using leaves, flowers and other natural materials.

**Anna Benari** will guide you through the techniques needed then give you the creative freedom to experiment. You'll leave with beautiful prints and a newfound appreciation of nature's textures. All materials are provided. No prior experience is needed, just bring your imagination!



### Accessibility Information

Full accessibility and venue information on pages 6 – 9.

You will feel different textures of paper, paint, and natural objects.

The workshop will have a calm and quiet environment. You will be encouraged to ask questions and share ideas.

### Alconbury Weald Pavilion

Thursday 10 April 2pm

### Soham Library

Saturday 17 May 10.30am

**Running time:** 2 hours

**Suitable for:**

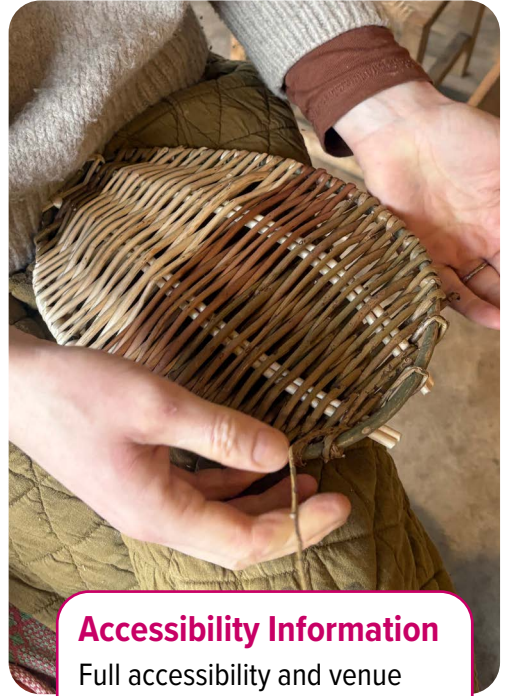
Adults and young people aged 5+ yrs

**Tickets:** £6.50/ £3



## Willow Weaving Workshop

Experience the magic of weaving willow. **Femke Lemmens** will show you how to set up a 'backbone', onto which you can weave an elegant, scooped tray. Experiment with different types and colours of willow. No previous experience required. All tools and materials provided.



**March Library**

**Friday 16 May 6pm**

**Burwell Library**

**Tuesday 20 May 6pm**

**Running time:** 2 hours

**Suitable for:**

Adults and young people aged 8+ yrs

**Tickets:** £6.50 / £3

### Accessibility Information

Full accessibility and venue information on pages 6 – 9.

Small Japanese side cutters will be shared between two people. Participants should take care when handling the willow tips. People with low finger strength may want to bring a person to support them (free companion tickets are available).

## Creating a greener, fairer, and more caring Cambridgeshire

Because we care about the planet, The Library Presents:

- Uses local venues, so participants don't have to travel far for quality events.
- Utilises our existing library buildings.
- Uses no plastic bottles and serves refreshments in recyclable packaging.
- Is switching to carbon free heating, with many buildings operating on air source heat pumps.
- Uses 90% recycled paper for brochures.
- Does not use paper tickets.
- Has reduced the number of printed brochures.
- Programmes events with environmental themes
- Works with artists to reduce their carbon footprint.



**Look out for the green leaf logo which highlights our activities with environmental themes.**

Cambridgeshire Libraries recognise that we need to play our part in contributing to wider local, national and international climate change efforts. As a library service we understand that we are in a position where we can influence, inspire and encourage others to lead more sustainable lifestyles.

Watch a short film about Cambridgeshire County Council's Net Zero 2030 commitment: <https://tinyurl.com/mvrm2c63>



# THE LIBRARY PRESENTS

The Library Presents brings quality arts activities into towns and villages across Cambridgeshire. The programme is run by Cambridgeshire County Council, working in partnership with Babylon ARTS and is funded by Arts Council England.



To join our mailing list for monthly updates please visit: [www.library.live/the-library-presents](http://www.library.live/the-library-presents)

ALCONBURY WEALD ● ARBURY ● BARNWELL  
BURWELL ● CAMBOURNE ● CAMBRIDGE CENTRAL  
CHATTERIS ● CHERRY HINTON ● CLAY FARM  
ELY ● HISTON ● HUNTINGDON ● LITTLEPORT  
MARCH ● NORTHSTOWE ● PAPWORTH ● RAMSEY  
SAWSTON ● SAWTRY ● SOHAM ● ST IVES ● ST NEOTS  
WHITTLESEY ● WISBECH

Find out more about the programme and how you can get involved at:

 [facebook.com/thelibrarypresents](https://facebook.com/thelibrarypresents)

 [@TheLibraryPresents](https://www.instagram.com/TheLibraryPresents)

[www.cambridgeshire.gov.uk/arts](http://www.cambridgeshire.gov.uk/arts)

For a plain text version of this brochure visit the website [www.library.live/the-library-presents](http://www.library.live/the-library-presents)

To request this booklet in another language please contact  
Lai pieprasītu šo brošūru jūsu valodā, lūdzu, sazinieties ar  
আপনার নজিরে ভাষায় এই পুস্তকিকার্টা পতেহেলা অনুগ্রহ করে  
নমিনলখিতি ব্যক্তির সাথে যোগাযোগ করবেন  
如需要這本用你的語言寫的冊子，請聯絡  
Prašom susiekti jeigu pageidaujate šios brošiūros jūsų kalba  
Osoby, które chciałyby otrzymać broszurę w swoim ojczystym  
języku prosimy o kontakt

[thelibrarypresents@cambridgeshire.gov.uk](mailto:thelibrarypresents@cambridgeshire.gov.uk)



This programme is 100% recyclable. Please dispose of responsibly.

Front cover images: Roshni, EmbodyXR by Mercurial Dance, SPLATI!, She-Wolves.

Above: Fused Glass Workshop, Fun Dance Workshop, Upcycled Musical Instrument Workshop.